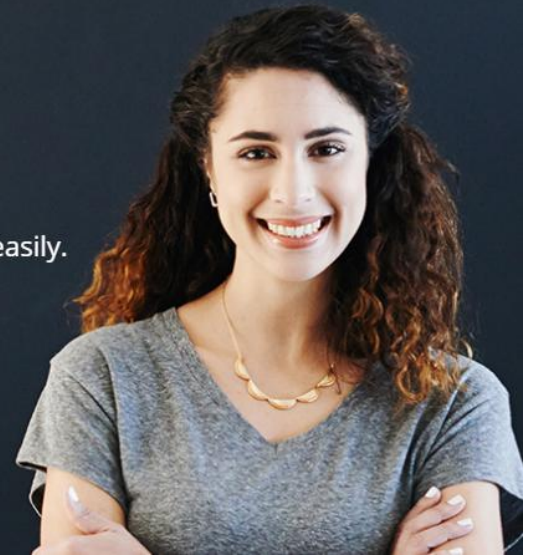


Fast2Test

Pass Your Next Certification Exam Fast!

Everything you need to prepare, learn & pass your certification exam easily.

365 days free updates. First attempt guaranteed success.



Instant Download

After Payment, our system will send you the products you purchase in mailbox in a minute after payment. If not received within 2 hours, please contact us.

365 Days Free Updates

Free update is available within 365 days after your purchase. After 365 days, you will get 50% discounts for updating.



Money Back Guarantee

Full refund if you fail the corresponding exam in 60 days after purchasing. And Free get any another product.

Security & Privacy

We respect customer privacy. We use McAfee's security service to provide you with utmost security for your personal information & peace of mind.

We're not the only ones **happy** about Fast2test Practice Materials ...

62316+ customers in 100+ countries use Fast2test Self Test Engine. Meet our customers.

<https://de.fast2test.com>

Anbieter der Studienmaterialien zur IT-Zertifizierung! Sicher, einfach und schnell. 100%-Pass-Garantie!

Exam : 070-690

Title : TS: Windows HPC Server 2008,
Configuring and Managing (English)

Vendors : Microsoft

Version : DEMO

NO.1 You administer a Windows HPC Server 2008 cluster. You plan to deploy new nodes to the cluster by using an existing node template. A folder and its files are stored on the head node. You need to ensure that the folder and its files are copied to each node by using the Server Message Block (SMB) protocol.

Which task should you add to the node template?

- A. Unicast Copy
- B. Multicast Copy
- C. Mount Share
- D. Apply WIM Image

Answer: A

NO.2 You are a system administrator for your company. Your company deploys a new Windows HPC Server 2008 cluster. The company requires a record of performance information over time. The record must include link latency and throughput statistics. You need to periodically execute a command that collects the required information. Which command should you run?

- A. ping.exe
- B. nltest.exe
- C. mpipingpong.exe
- D. Get-HPCMetric.ps1

Answer: C

NO.3 You administer a Windows HPC Server 2008 cluster. You have recently deployed 10 new nodes to the cluster. Users report that only seven of the new nodes function as part of the cluster. You discover that three new nodes are in the Unknown state. You need to find out the problem that has prevented the three nodes from joining the cluster. What should you do?

- A. Run the Connectivity diagnostics tool and view the results of the DNS Name Resolution test.
- B. Run the Connectivity diagnostics tool and view the results of the Internode Connectivity test.
- C. Run the System Configuration diagnostics tool and view the results of the Required

Software Updates

test.

D. Run the System Configuration diagnostics tool and view the results of the Application Configuration

test.

Answer: C

NO.4 You administer a Windows HPC Server 2008 cluster. All jobs submitted to the cluster fail. You discover that the nodes communicate successfully. You need to ensure that the jobs can be submitted successfully.

What should you do first.?

A. Start the HPC Basic Profile Web Service on all nodes.

B. Start the HPC Cluster Manager and enable job Backfilling.

C. Start the HPC Cluster Manager and run the MPI Lightweight throughput test.

D. Start the HPC Cluster Manager and run the job submission diagnostics tool on all nodes.

Answer: D

NO.5 You administer a Windows HPC Server 2008 cluster that has 120 compute nodes. The cluster requires

10 additional compute nodes. You manually install Windows Server 2008 Enterprise Edition on 10 new

servers and connect them to the cluster networks. You open HPC Management Console, start the Add

Node Wizard, and select an option to add preconfigured compute nodes. You discover that the wizard is

unable to list any of the new servers. You need to ensure that all the new servers are available for the

wizard. What should you do before you restart the wizard?

A. Install HPC Pack 2008 on the new servers and specify the name of the head node.

B. Create a node template that does not include a step to deploy an operating system image.

C. Configure Windows Deployment Services to respond to all preboot execution environment (PXE)

requests.

D. Move the computer accounts for the new servers in the same organizational unit (OU) that contains the

computer account of the head node.

Answer: A

NO.6 You administer a Windows HPC Server 2008 cluster that has 150 nodes. Users report that cluster jobs take longer than normal to complete. You need to calculate the network latency between the nodes. What should you do?

- A. Run a serial ring test across all nodes by using the mpipingpong.exe utility.
- B. Run the ping command on all broker nodes by using the clusrun.exe utility.
- C. Run the etl2otf command on all nodes by using the mpiexec.exe utility.
- D. Run the etl2clog command on all broker nodes by using the mpiexec.exe utility.

Answer: A

NO.7 You are a system administrator for your company. Your company has deployed a Windows HPC Server 2008 cluster. The HPC nodes are deployed by using a node template that is configured to deploy

Windows HPC Pack on each node. You need to modify the node template so that HPC PowerShell and the HPC Cluster Manager are installed on the new nodes. What should you do?

- A. Install HPC PowerShell and the HPC Cluster Manager on the HPC head node. Recreate the node template by using the same settings.
- B. Add a Run OS Command task to the node template after the Install HPC Pack task. Configure the Run OS Command task to install the utilities.
- C. Add a Unicast Copy task to the node template before the Install HPC Pack task. Configure the Unicast Copy task to copy HPC PowerShell and the HPC Cluster Manager.
- D. Add a Unicast Copy task to the node template to copy the utilities. Add a Run OS Command task to the node template to install the utilities. Delete the original Install HPC Pack task.

Answer: D

NO.8 You administer a Windows HPC Server 2008 cluster for your company. You plan to add new nodes to the cluster by using bare metal provisioning capabilities. You need to ensure the new nodes adhere to your company naming standards. What should you do?

- A. Add a naming series to the head node.
- B. Modify the NodeConfigurationFile.xsd file.
- C. Modify the NodeInfo.xml file to contain an appropriate name for each node.
- D. Create a new node template that contains an appropriate name for each node.

Answer: A

NO.9 You are deploying a Windows HPC Server 2008 cluster for your company. The cluster head node is configured with a network topology that has compute nodes isolated on a private network. You want to add new servers as compute nodes to the cluster. You open the HPC Management Console, start the Add Node Wizard, and select an option to add compute nodes from an operating system image. You start the new servers and discover that the wizard is unable to display any of the new servers on the Select New Nodes page. You need to ensure that the new servers are displayed on the Select New Nodes page of the wizard. What should you do?

- A. Configure the network switches to support the cut-through switching method.
- B. Configure Windows Deployment Services on the head node to respond to all preboot execution environment (PXE) requests.
- C. Configure the compute node servers for preboot execution environment (PXE) boot from the NIC that is connected to the private network.
- D. Prestage computer accounts for the new servers in Active Directory Domain Services.

Answer: C

NO.10 You administer a Windows HPC Server 2008 cluster for your company. You plan to configure a new node template to deploy the evaluation edition of Windows Server 2008 HPC Edition. You need to ensure that the deployment of nodes that use the template is successful. What should you do?

- A. Add a Tag element to the node XML file. Set the value of the attribute of the Tag element to Evaluation.
- B. Add a Template element to the node XML file. Set the value of the Name attribute to Evaluation.

C. Add a Template element to the node XML file. Set the value of the Provisioned attribute to False.

D. Add a Template element to the node XML file. Set the value of the ProductKey attribute to a valid

Windows Server HPC Edition product key.

Answer: D