

Fast2Test

Pass Your Next Certification Exam Fast!

Everything you need to prepare, learn & pass your certification exam easily.

365 days free updates. First attempt guaranteed success.



Instant Download

After Payment, our system will send you the products you purchase in mailbox in a minute after payment. If not received within 2 hours, please contact us.

365 Days Free Updates

Free update is available within 365 days after your purchase. After 365 days, you will get 50% discounts for updating.



Money Back Guarantee

Full refund if you fail the corresponding exam in 60 days after purchasing. And Free get any another product.

Security & Privacy

We respect customer privacy. We use McAfee's security service to provide you with utmost security for your personal information & peace of mind.

We're not the only ones **happy** about Fast2test Practice Materials ...

62316+ customers in 100+ countries use Fast2test Self Test Engine. Meet our customers.

<https://de.fast2test.com>

Anbieter der Studienmaterialien zur IT-Zertifizierung! Sicher, einfach und schnell. 100%-Pass-Garantie!

Exam : **300-115**

Title : **Implementing Cisco IP
Switched Networks**

Vendor : **Cisco**

Version : **DEMO**

NO.1 The Cisco StackWise dual-active detection mechanism is most useful under which condition?

- A. when the active switch experiences a MEC link failure
- B. when the active switch experiences a standby failure
- C. when the active switch enters an inoperable state
- D. when the active switch is still operational after a virtual link failure

Answer: B

NO.2 A network engineer deployed a switch that operates the LAN base feature set and decides to use the SDM VLAN template. The SDM template is causing the CPU of the switch to spike during peak working hours.

What is the root cause of this issue?

- A. The switch needs to be rebooted before the SDM template takes effect.
- B. The VLAN template disables routing in hardware.
- C. The VLAN receives additional frames from neighboring switches.
- D. The SDM VLAN template causes the MAC address-table to overflow.

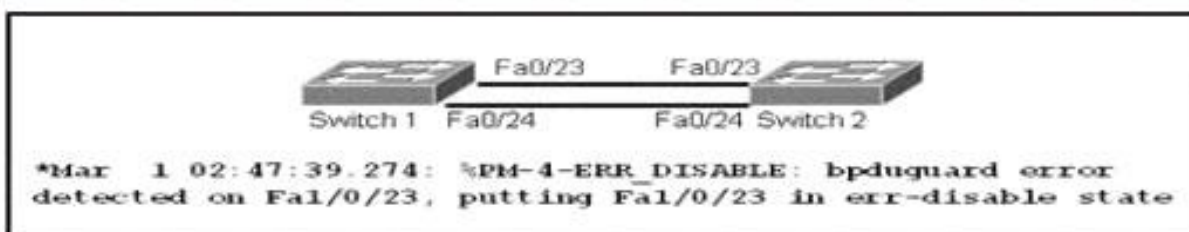
Answer: B

NO.3 Which two statements about LLDP frames are true? (Choose two)

- A. They have an EtherType of 0x8080.
- B. Each LLDP frame contains a sequence of TLVs.
- C. They contain a CRC for error checking.
- D. All switches forward the destination MAC address in a LLDP frame.
- E. The destination MAC address in a LLDP frame is a multicast address.
- F. Each LLDP frame includes a field containing the CoS value.

Answer: B,D

NO.4 Refer to the exhibit.



An engineer is configuring a trunking port-channel between Switch 1 and Switch 2 and receives an error message on Switch 1. Which action corrects this error?

- A. disabling BPDU guard on interface Fa0/23 of Switch 2
- B. disabling BPDU guard on interface Fa0/23 of Switch 1
- C. enabling BPDU guard on interface Fa0/23 of Switch 2
- D. enabling BPDU guard on interface Fa0/23 of Switch 1

Answer: B

NO.5 Which two tasks must you perform to correctly configure IP Source Guard on a switch? (Choose two)

- A. Enable DHCP option 82
- B. Enable DHCP snooping on the switch
- C. Configure the Ip verify source vlan dhcp-snooping command
- D. Enable DHCP packet validation on the device
- E. Configure the DHCP snooping relay

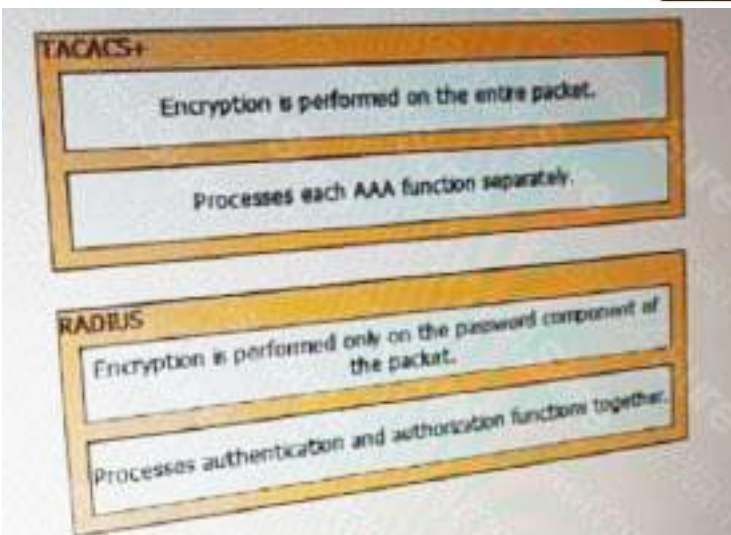
Answer: B,C

NO.6 Drag and drop the statements about remote security databases from the left onto the correct security database types on the right.

Encryption is performed on the entire packet.	TACACS+ <div style="border: 1px solid black; height: 20px; margin-bottom: 5px;"></div> <div style="border: 1px solid black; height: 20px;"></div>
Encryption is performed only on the password component of the packet.	
Processes authentication and authorization functions together.	RADIUS <div style="border: 1px solid black; height: 20px; margin-bottom: 5px;"></div> <div style="border: 1px solid black; height: 20px;"></div>
Processes each AAA function separately.	

Answer:

Encryption is performed on the entire packet.	TACACS+ <div style="border: 1px solid black; padding: 5px; margin-bottom: 5px;">Encryption is performed on the entire packet.</div> <div style="border: 1px solid black; padding: 5px;">Processes each AAA function separately.</div>
Encryption is performed only on the password component of the packet.	
Processes authentication and authorization functions together.	RADIUS <div style="border: 1px solid black; padding: 5px; margin-bottom: 5px;">Encryption is performed only on the password component of the packet.</div> <div style="border: 1px solid black; padding: 5px;">Processes authentication and authorization functions together.</div>
Processes each AAA function separately.	



NO.7 Which benefit of StackWise is true?

- A. It allows multiple switches to be managed by a single management address
- B. It supports single-chassis EtherChannel mode option

C. It enables a Layer 2 switch to be converted to a Layer 3 switch when additional switches are added to the stack

D. It allows multiple switches to operate independently while sharing a single management address

Answer: A

NO.8 Which statement describes the result of configuring SPAN on a Cisco device?

A. SPAN halves the capacity of the source port.

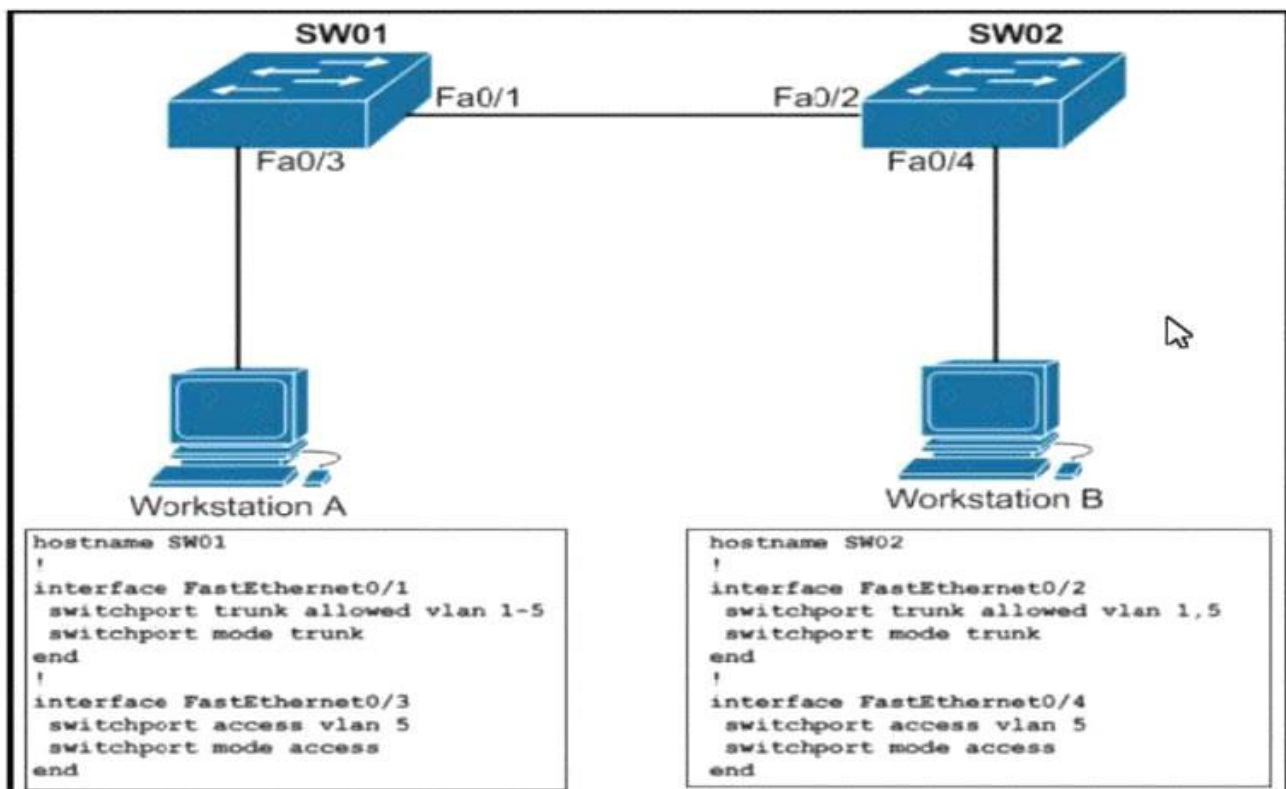
B. If not carefully planned, SPAN can lead to loops between source and destination ports.

C. SPAN blocks for normal use one additional port for each configured source port

D. SPAN doubles traffic internally

Answer: C

NO.9 Refer to the exhibit .



Which description of the effect of entering the switchport trunk allowed vlan 2,3,4 command on FastEthernet0/2 on SW02 is true?

A. The running configuration displays switchport trunk allowed vlan 1-5 for Fa0/2

B. The two workstations stop communicating because they are on VLAN 5. which is not allowed on the trunk

C. The command is unsupported on a trunk where VLANs have already been pruned manually

Answer: B

NO.10 A Cisco Catalyst switch that is prone to reboots continues to rebuild the DHCP snooping database. What is the solution to avoid the snooping database from being rebuilt after every device reboot?

A. Disable Option 82 for DHCP data insertion.

- B. Enable DHCP snooping for all VLANs that are associated with the switch.
- C. Use IP Source Guard to protect the DHCP binding table entries from being lost upon rebooting.
- D. A DHCP snooping database agent should be configured.
- E. Apply ip dhcp snooping trust on all interfaces with dynamic addresses.

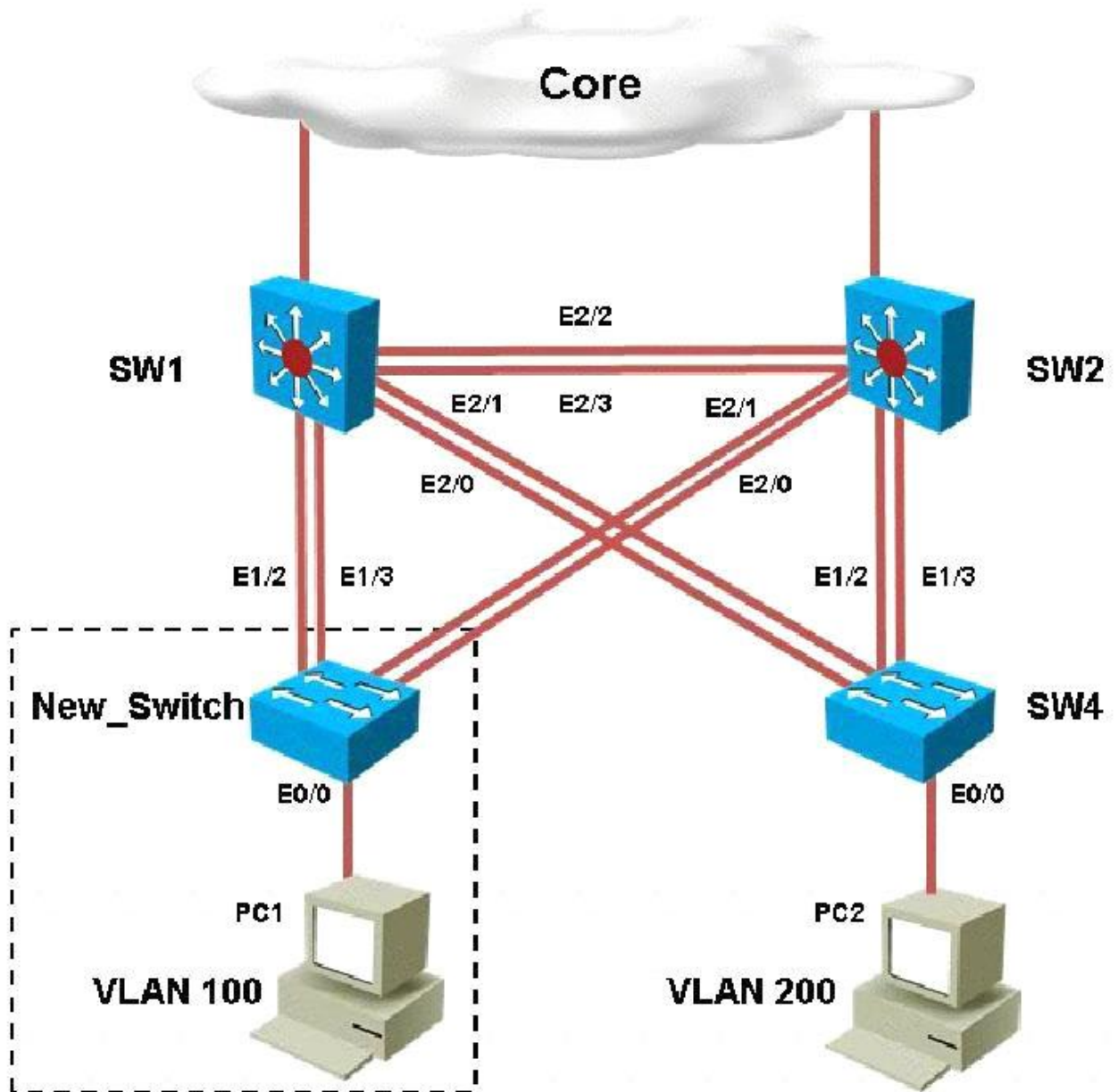
Answer: D

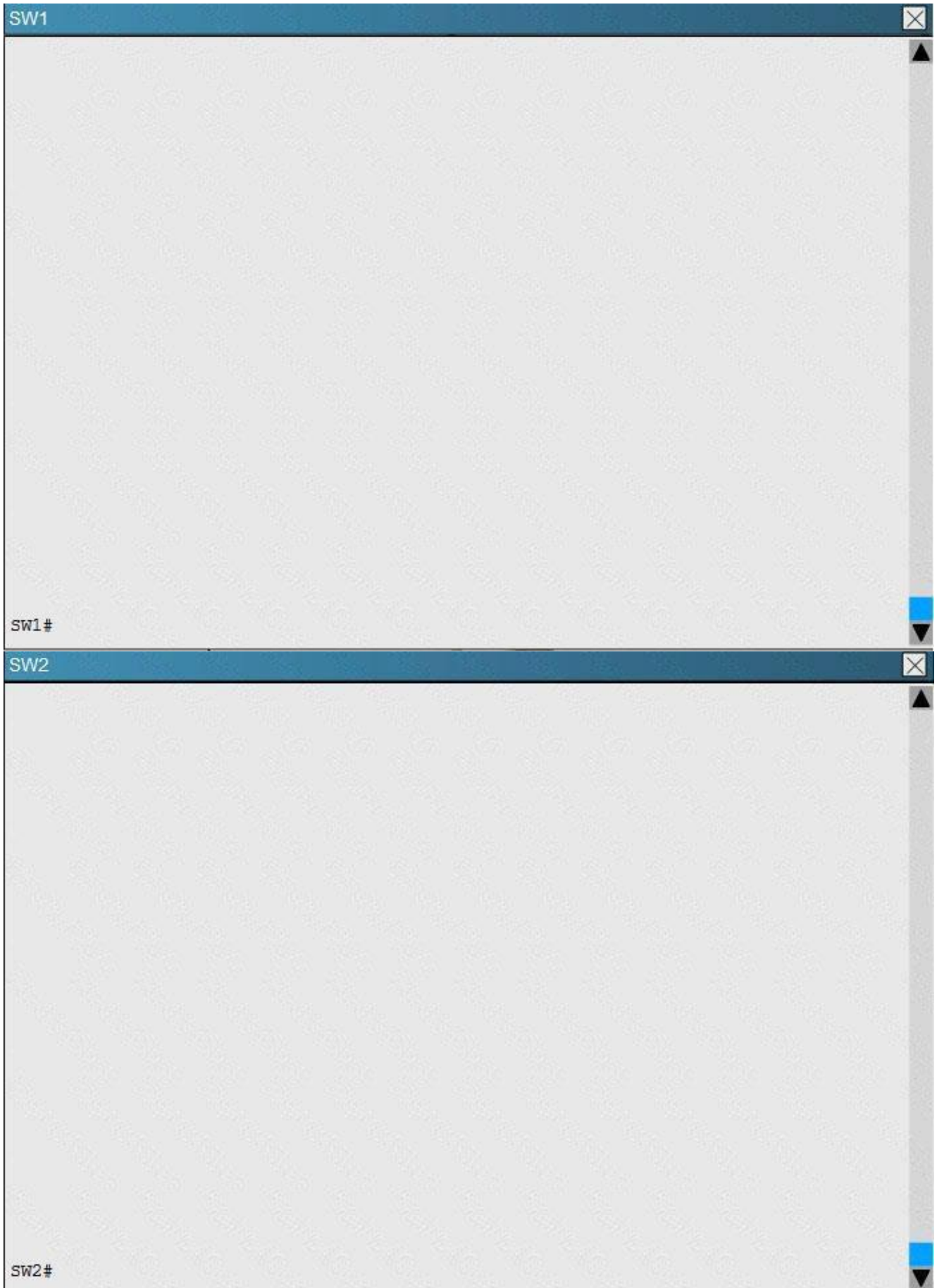
NO.11 Which three features can be optimized by using SDM templates? (Choose three.)

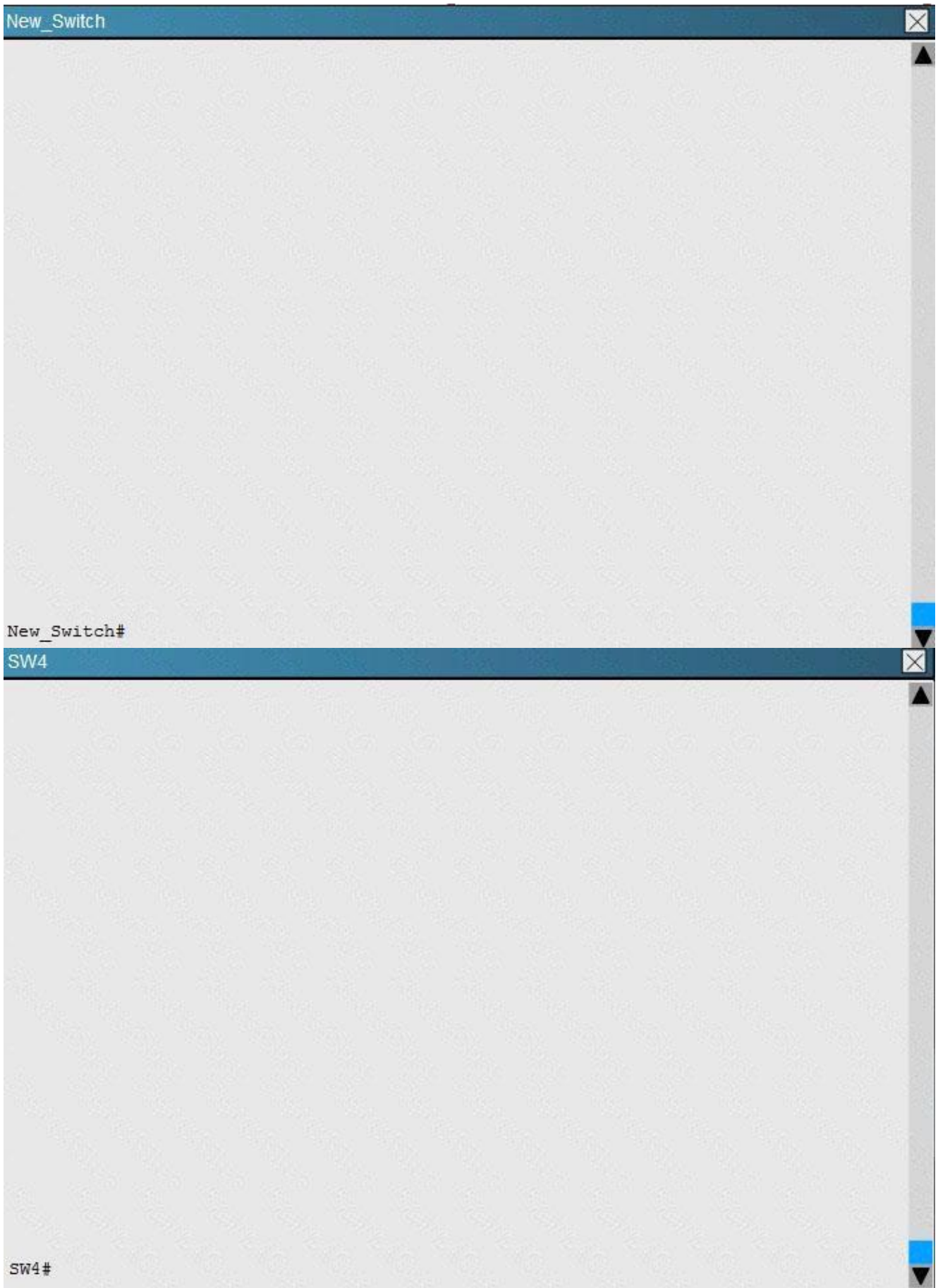
- A. trunk
- B. access
- C. port security
- D. routing
- E. DHCP snooping
- F. VLAN

Answer: B,D,F

NO.12 You have been asked to install and configure a new switch in a customer network. Use the console access to the existing and new switches to configure and verify correct device configuration.







You are adding new VLANs. VLAN500 and VLAN600 to the topology in such way that you need to

configure SW1 as primary root for VLAN 500 and secondary for VLAN 600 and SW2 as primary root for VLAN 600 and secondary for VLAN 500. Which configuration step is valid?

- A. Configure VLAN 500 and VLAN 600 on SW2 only
- B. Configure VLAN 500 and VLAN 600 on SW1 ,SW2 and SW4
- C. Configure VLAN 500 and VLAN 600 on SW1 only
- D. On SW2; configure vtp mode as off and configure VLAN 500 and VLAN 600; configure back to vtp server mode.
- E. Configure VLAN 500 & VLAN 600 on both SW1 & SW2

Answer: E

Explanation

By issuing the "show vtp status command on SW1, SW2, and SW4 we see that both SW1 and SW2 are operating in VTP server mode, but SW4 is a client, so we will need to add both VLANs to SW1 and SW2.

SW1

```
SW1#show vtp status
VTP Version capable      : 1 to 3
VTP version running     : 3
VTP Domain Name         : CCNP
VTP Pruning Mode        : Enabled
VTP Traps Generation    : Disabled
Device ID                : aabb.cc00.2500

Feature VLAN:
-----
VTP Operating Mode      : Server
Number of existing VLANs : 8
Number of existing extended VLANs : 0
Maximum VLANs supported locally : 4096
Configuration Revision  : 11
Primary ID              : aabb.cc00.2b00
Primary Description     : SW1
MD5 digest              : 0xA2 0xFA 0x6E 0x8D 0xD0 0xDE 0x5A 0xEF
                       : 0xE3 0x65 0x9A 0xF7 0x03 0xBF 0xBA 0x10
```

SW2

```

SW2#show vtp status
VTP Version capable      : 1 to 3
VTP version running     : 3
VTP Domain Name         : CCNP
VTP Pruning Mode        : Enabled
VTP Traps Generation    : Disabled
Device ID               : aabb.cc00.2600

Feature VLAN:
-----
VTP Operating Mode      : Server
Number of existing VLANs : 8
Number of existing extended VLANs : 0
Maximum VLANs supported locally : 4096
Configuration Revision  : 11
Primary ID              : aabb.cc00.2b00
Primary Description     : SW1
MD5 digest              : 0xA2 0xFA 0x6E 0x8D 0xD0 0xDE 0x5A 0xEF
                       : 0xE3 0x65 0x9A 0xF7 0x03 0xBF 0xBA 0x10

```

SW4

```

SW4#show vtp status
VTP Version capable      : 1 to 3
VTP version running     : 3
VTP Domain Name         : CCNP
VTP Pruning Mode        : Enabled
VTP Traps Generation    : Disabled
Device ID               : aabb.cc00.2800

Feature VLAN:
-----
VTP Operating Mode      : Client
Number of existing VLANs : 8
Number of existing extended VLANs : 0
Maximum VLANs supported locally : 4096
Configuration Revision  : 11
Primary ID              : aabb.cc00.2b00
Primary Description     : SW1
MD5 digest              : 0xA2 0xFA 0x6E 0x8D 0xD0 0xDE 0x5A 0xEF
                       : 0xE3 0x65 0x9A 0xF7 0x03 0xBF 0xBA 0x10

```

NO.13 Which two commands verify the DHCP snooping configuration on a device? (Choose two.)

- A. show running-config | include snooping
- B. clear ip dhcp snooping binding
- C. show ip dhcp snooping
- D. show ip dhcp relay
- E. show ip dhcp pool

Answer: A,C

NO.14 Which two TLVs are included in Cisco Discovery Protocol advertisements? (Choose two)

- A. Native VLAN TLV
- B. Network Policy TLV
- C. VTP Management Domain TLV
- D. Inventory Management TLV
- E. System Name TLV

Answer: A,C

NO.15 When Ether Channel guard is enabled and a misconfiguration is detected on a port, how does the port respond?

- A. The port remains up, but it is unable to pass traffic
- B. enters the errdisable state
- C. enters the shutdown state
- D. It enters the channel-error state
- E. The port state remains unchanged, but the EtherChannel stays down.

Answer: B