

# Fast2Test

## Pass Your Next Certification Exam Fast!

Everything you need to prepare, learn & pass your certification exam easily.

365 days free updates. First attempt guaranteed success.



### Instant Download

After Payment, our system will send you the products you purchase in mailbox in a minute after payment. If not received within 2 hours, please contact us.

### 365 Days Free Updates

Free update is available within 365 days after your purchase. After 365 days, you will get 50% discounts for updating.



### Money Back Guarantee

Full refund if you fail the corresponding exam in 60 days after purchasing. And Free get any another product.

### Security & Privacy

We respect customer privacy. We use McAfee's security service to provide you with utmost security for your personal information & peace of mind.

We're not the only ones **happy** about Fast2test Practice Materials ...

**62316+** customers in 100+ countries use Fast2test Self Test Engine. Meet our customers.

<https://de.fast2test.com>

Anbieter der Studienmaterialien zur IT-Zertifizierung! Sicher, einfach und schnell. 100%-Pass-Garantie!

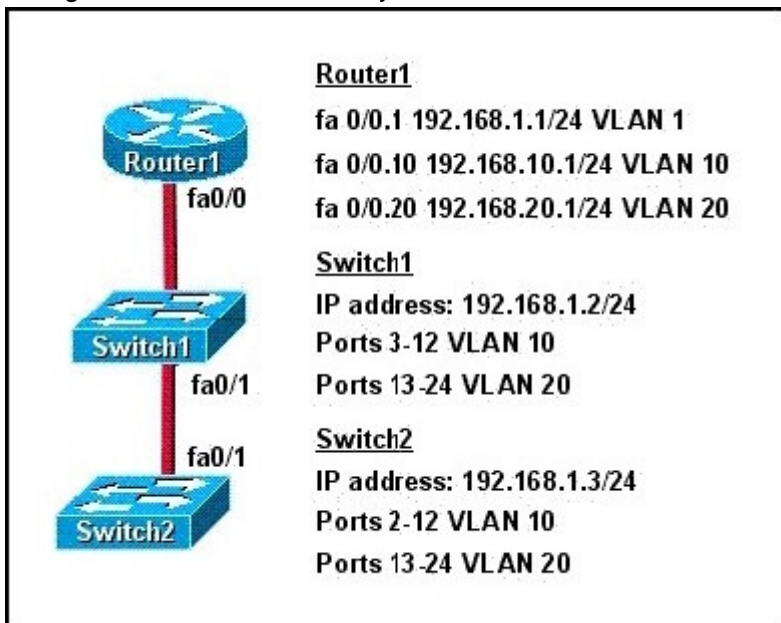
**Exam :** 640-816

**Title :** Interconnecting Cisco Networking  
Devices Part 2

**Vendors :** Cisco

**Version :** DEMO

1. How should the FastEthernet0/1 ports on the 2950 model switches that are shown in the exhibit be configured to allow connectivity between all devices?



A. The ports only need to be connected by a crossover cable.

B. SwitchX (config)# interface fastethernet 0/1

SwitchX (config-if)# switchport mode access

SwitchX (config-if)# switchport access vlan 1

C. SwitchX (config)# interface fastethernet 0/1

SwitchX (config-if)# switchport mode trunk

SwitchX (config-if)# switchport trunk vlan 1

SwitchX (config-if)# switchport trunk vlan 10

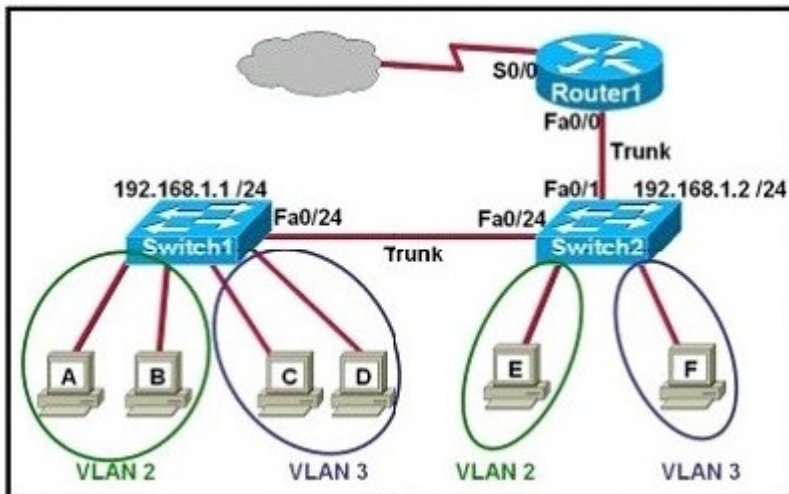
SwitchX (config-if)# switchport trunk vlan 20

D. SwitchX(config)# interface fastethernet 0/1

SwitchX(config-if)# switchport mode trunk

**Answer: D**

2. Which two statements are true about interVLAN routing in the topology that is shown in the exhibit?  
 (Choose two.)



- A. Host E and host F use the same IP gateway address.
- B. Router1 and Switch2 should be connected via a crossover cable.
- C. Router1 will not play a role in communications between host A and host D.
- D. The FastEthernet 0/0 interface on Router1 must be configured with subinterfaces.
- E. Router1 needs more LAN interfaces to accommodate the VLANs that are shown in the exhibit.
- F. The FastEthernet 0/0 interface on Router1 and Switch2 trunk ports must be configured using the same encapsulation type.

**Answer: DF**

3.A department decides to replace its hub with a Catalyst 2950 switch that is no longer needed by another department. To prepare the switch for installation, the network administrator has erased the startup configuration and reloaded the switch. However, PCs that are connected to the switch experience various connectivity problems. What is a possible cause of the problem?

- A. The VLAN database was not erased.
- B. The management VLAN is disabled.
- C. The running configuration should have been erased.
- D. The "mode" button was not pressed when the switch was reloaded.
- E. The switch was not configured with an IP address or a default gateway.

**Answer: A**

4.Why has this switch not been elected the root bridge for VLAN1?

```
Switch# show spanning-tree vlan 1
VLAN0001
Spanning tree enabled protocol rstp
  Root ID    Priority    20481
             Address     0008.217a.5800
             Cost        38
             Port        1 (FastEthernet0/1)
             Hello Time  2 sec  Max Age 20 sec  Forward Delay 15 sec

  Bridge ID  Priority    32769 (priority 32768 sys-id-ext 1)
             Address     0008.205e.6600
             Hello Time  2 sec  Max Age 20 sec  Forward Delay 15 sec
             Aging Time 300

Interface         Role Sts Cost          Prio.Nbr Type
-----
Fa0/1             Root FWD 19            128.1   P2p
Fa0/4             Desg FWD 38            128.1   P2p
Fa0/11            Altn BLK 57            128.1   P2p
Fa0/13            Desg FWD 38            128.1   P2p
```

- A. It has more than one interface that is connected to the root network segment.
- B. It is running RSTP while the elected root bridge is running 802.1d spanning tree.
- C. It has a higher MAC address than the elected root bridge.
- D. It has a higher bridge ID than the elected root bridge.

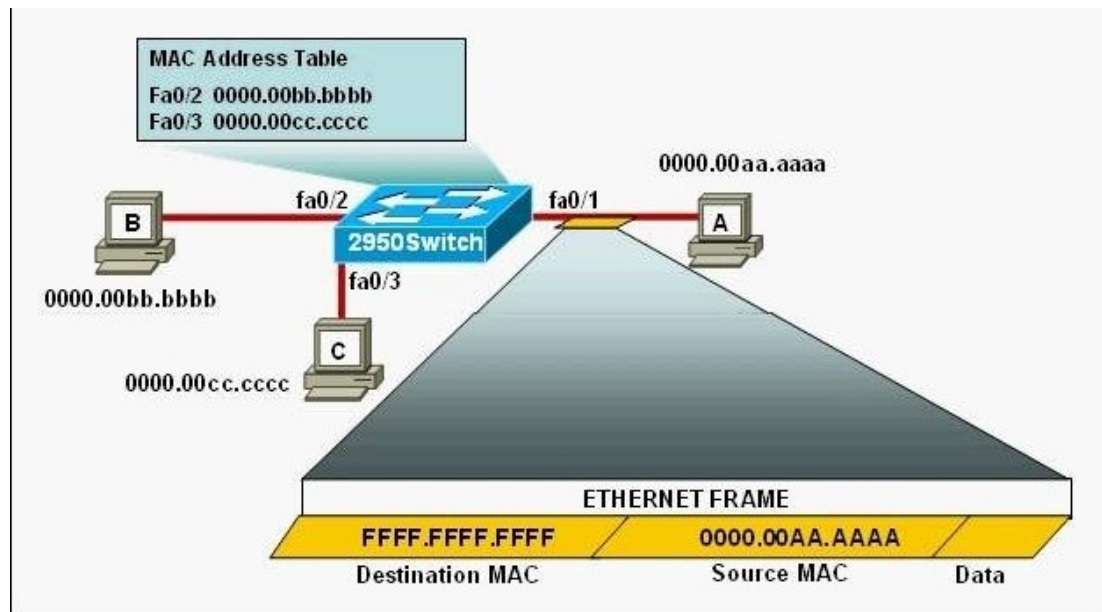
**Answer: D**

5.The following commands are executed on interface fa0/1 of 2950Switch.

```
2950Switch(config-if)# switchport port-security
2950Switch(config-if)# switchport port-security mac-address sticky
2950Switch(config-if)# switchport port-security maximum 1
```

The Ethernet frame that is shown arrives on interface fa0/1.

What two functions will occur when this frame is received by 2950Switch? (Choose two.)



- A. The MAC address table will now have an additional entry of fa0/1 FFFF.FFFF.FFFF.
- B. Only host A will be allowed to transmit frames on fa0/1.
- C. This frame will be discarded when it is received by 2950Switch.
- D. All frames arriving on 2950Switch with a destination of 0000.00aa.aaaa will be forwarded out fa0/1.
- E. Hosts B and C may forward frames out fa0/1 but frames arriving from other switches will not be forwarded out fa0/1.
- F. Only frames from source 0000.00bb.bbbb, the first learned MAC address of 2950Switch, will be forwarded out fa0/1.

**Answer: BD**

6. Which two of these statements regarding RSTP are correct? (Choose two.)

- A. RSTP cannot operate with PVST+.
- B. RSTP defines new port roles.
- C. RSTP defines no new port states.
- D. RSTP is a proprietary implementation of IEEE 802.1D STP.
- E. RSTP is compatible with the original IEEE 802.1D STP.

**Answer: BE**

7. A network administrator cannot establish a Telnet session with the indicated router. What is the cause of this failure?

```

Current configuration : 639 bytes
!
version 12.4
no service timestamps log datetime msec
no service timestamps debug datetime msec
service password-encryption
!
hostname Router
!

enable secret 5 $1$mERr$htx5rvt7rPNoS4wqbX0X7m0
!

interface FastEthernet0/0
 ip address 192.168.1.1 255.255.255.0
 ip access-group 101 in
 duplex auto
 speed auto
!
access-list 101 deny tcp any any eq 22
access-list 101 permit ip any any
!
line con 0
 password 7 082245500A16
 login
line vty 0 4
 login
line vty 5 14
 login
!
end

```

- A. A Level 5 password is not set.
- B. An ACL is blocking Telnet access.
- C. The vty password is missing.
- D. The console password is missing.

**Answer: C**

8. A network administrator needs to configure port security on a switch.

Which two statements are true? (Choose two.)

- A. The network administrator can apply port security to dynamic access ports.
- B. The network administrator can apply port security to EtherChannels.
- C. When dynamic MAC address learning is enabled on an interface, the switch can learn new addresses, up to the maximum defined.
- D. The sticky learning feature allows the addition of dynamically learned addresses to the running configuration.
- E. The network administrator can configure static secure or sticky secure MAC addresses in the voice

VLAN.

**Answer:** CD

9. What are two characteristics of a switch that is configured as a VTP client? (Choose two.)

- A. If a switch that is configured to operate in client mode cannot access a VTP server, then the switch reverts to transparent mode.
- B. On switches that are configured to operate in client mode, VLANs can be created, deleted, or renamed locally.
- C. The local VLAN configuration is updated only when an update that has a higher configuration revision number is received.
- D. VTP advertisements are not forwarded to neighboring switches that are configured in VTP transparent mode.
- E. VTP client is the default VTP mode.
- F. When switches in VTP client mode are rebooted, they send a VTP advertisement request to the VTP servers.

**Answer:** CF

10. At which layer of the OSI model is RSTP used to prevent loops?

- A. physical
- B. data link
- C. network
- D. transport

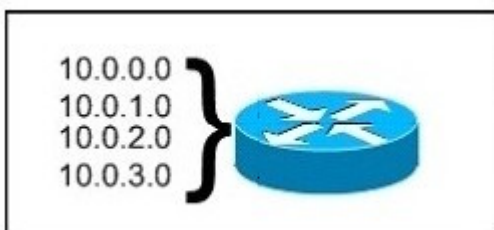
**Answer:** B

11. Which protocol provides a method of sharing VLAN configuration information between two Cisco switches?

- A. STP
- B. VTP
- C. 802.1Q
- D. RSTP

**Answer:** B

12. What is the most appropriate summarization for these routes?



- A. 10.0.0.0 /21
- B. 10.0.0.0 /22
- C. 10.0.0.0 /23
- D. 10.0.0.0 /24

**Answer: B**

13. The network administrator has been asked to give reasons for moving from IPv4 to IPv6. What are two valid reasons for adopting IPv6 over IPv4? (Choose two.)

- A. no broadcast
- B. change of source address in the IPv6 header
- C. change of destination address in the IPv6 header
- D. Telnet access does not require a password
- E. autoconfiguration
- F. NAT

**Answer: AE**

14. The network technician is planning to use the 255.255.255.224 subnet mask on the network. Which three valid IP addresses can the technician use for the hosts? (Choose three.)

- A. 172.22.243.127
- B. 172.22.243.190
- C. 172.22.243.191
- D. 192.168.1.160
- E. 10.17.64.34
- F. 10.16.33.98

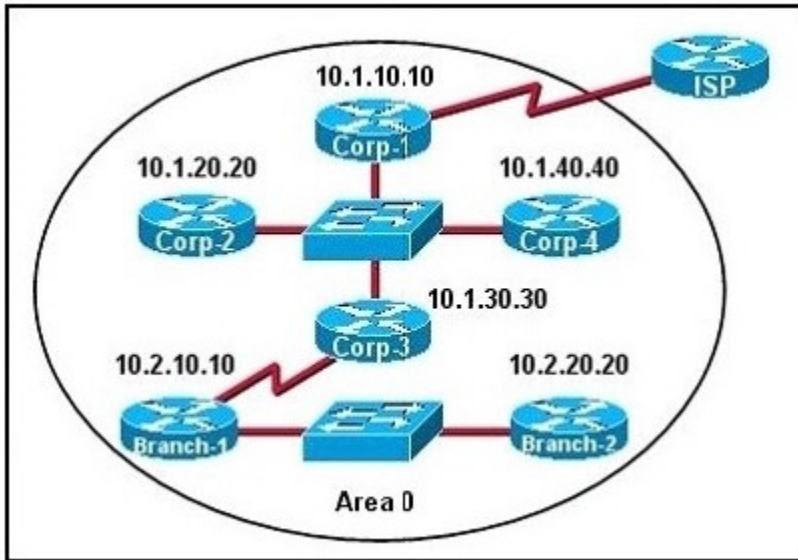
**Answer: BEF**

15. Which of these represents an IPv6 link-local address?

- A. FE80::380e:611a:e14f:3d69
- B. FE81::280f:512b:e14f:3d69
- C. FEFE:0345:5f1b::e14d:3d69
- D. FE08::280e:611:a:f14f:3d69

**Answer: A**

16. The internetwork infrastructure of company XYZ consists of a single OSPF area as shown in the graphic.



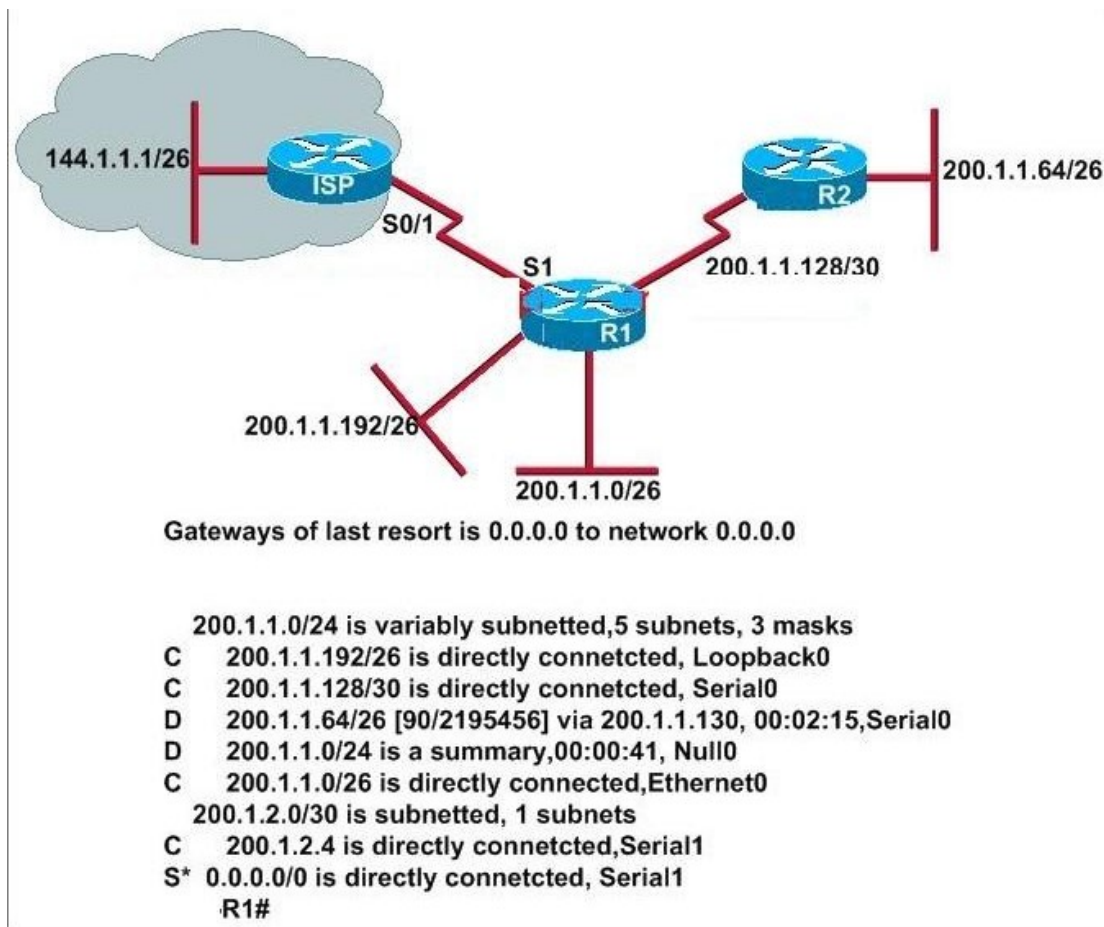
There is concern that a lack of router resources is impeding internetwork performance. As part of examining the router resources, the OSPF DRs need to be known. All the router OSPF priorities are at the default and the router IDs are shown with each router.

Which routers are likely to have been elected as DR? (Choose two.)

- A. Corp-1
- B. Corp-2
- C. Corp-3
- D. Corp-4
- E. Branch-1
- F. Branch-2

**Answer: DF**

17.Refer to the exhibit.



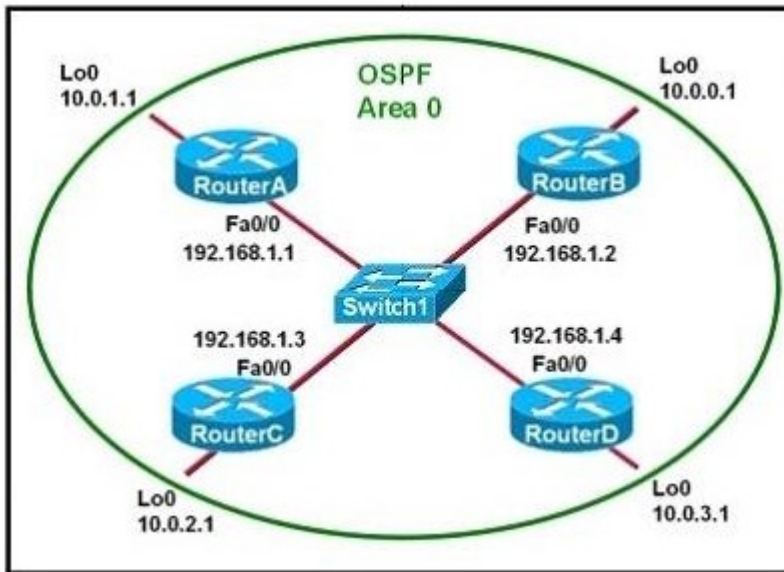
Based on the output of the R1# show ip route command and the information presented in the graphic, which of the following is a potential routing problem?

- A. the use of summarization for discontinuous networks
- B. the use of CIDR with a routing protocol that does not support it
- C. the use of VLSM with a routing protocol that does not support it
- D. the use of the no auto-summary command with a protocol that does not support summarization
- E. the use of the ip route 0.0.0.0 0.0.0.0 command with a routing protocol that does not support it

**Answer: A**

18. Refer to the exhibit.

Which two statements are true about the loopback address that is configured on RouterB? (Choose two.)



- A. It ensures that data will be forwarded by RouterB.
- B. It provides stability for the OSPF process on RouterB.
- C. It specifies that the router ID for RouterB should be 10.0.0.1.
- D. It decreases the metric for routes that are advertised from RouterB.
- E. It indicates that RouterB should be elected the DR for the LAN.

**Answer: BC**

19. What are three characteristics of the OSPF routing protocol? (Choose three.)

- A. It converges quickly.
- B. OSPF is a classful routing protocol.
- C. It uses cost to determine the best route.
- D. It uses the DUAL algorithm to determine the best route.
- E. OSPF routers send the complete routing table to all directly attached routers.
- F. OSPF routers discover neighbors before exchanging routing information.

**Answer: ACF**

20. An administrator is troubleshooting a problem between routers that are using different versions of RIP. Which two commands would provide information about which version of RIP was being sent and received on an interface? (Choose two.)

- A. show ip protocols
- B. show ip route rip
- C. show interfaces
- D. debug rip routing
- E. debug ip rip

**Answer: AE**